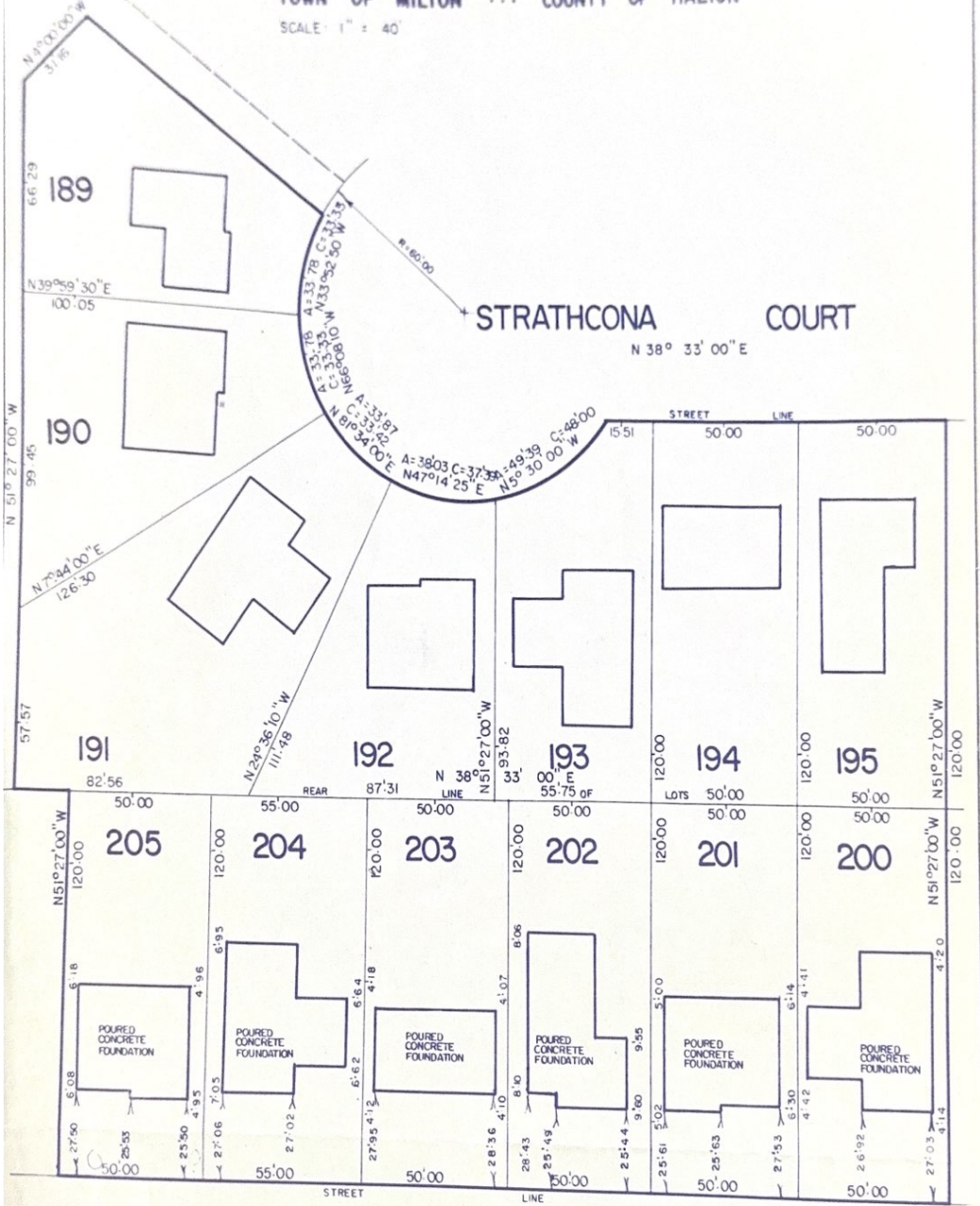


PLAN SHOWING LOCATION OF BUILDINGS ON
 LOTS 189-195 (INCLUSIVE) & LOTS 200-205 (INCLUSIVE)
 REGISTERED PLAN M-68 (LAND TITLES OFFICE)
 TOWN OF MILTON ... COUNTY OF HALTON
 SCALE: 1" = 40'



LORNE SCOTS DRIVE

WILLIAM J. PLAXTON BA, OLS.
 ONTARIO LAND SURVEYOR
 3259 YONGE STREET,
 TORONTO 12, ONTARIO.
 483 - 0550.
William J. Plaxton
 ONTARIO LAND SURVEYOR.

DATE: OCTOBER 6, 1972
 FOR: VILLAGE OF MILTON